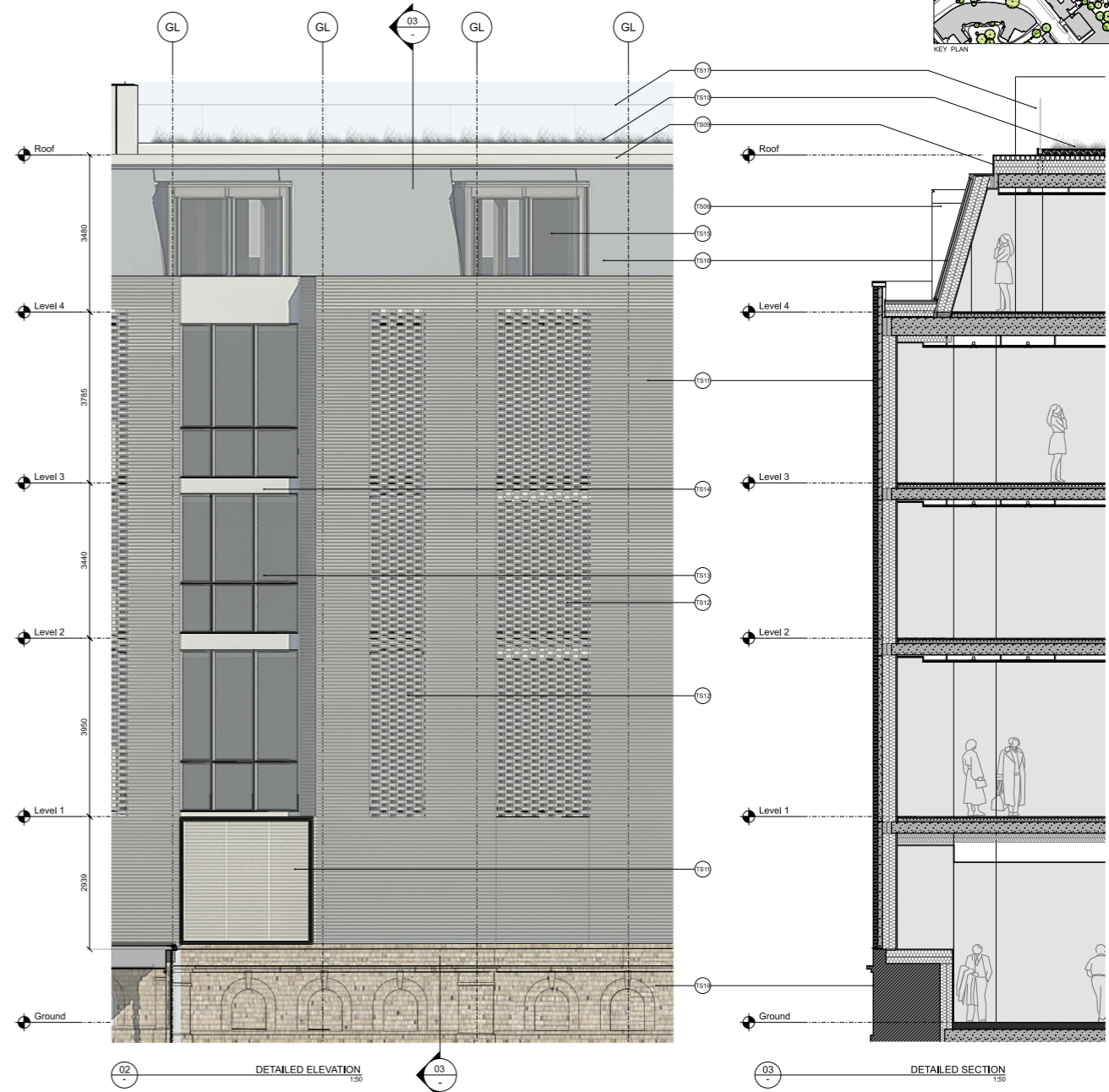
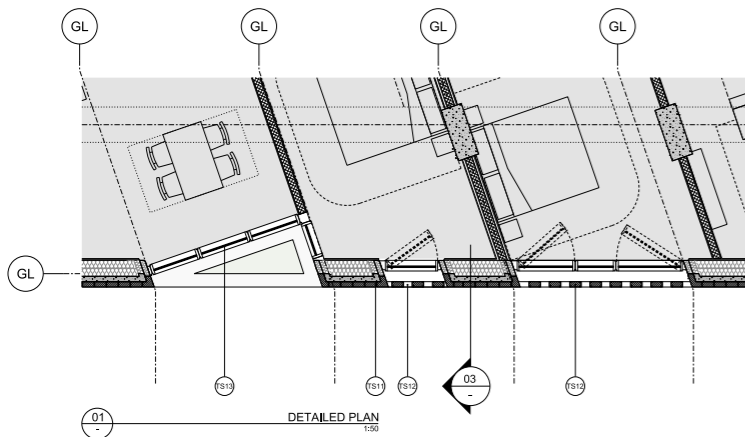


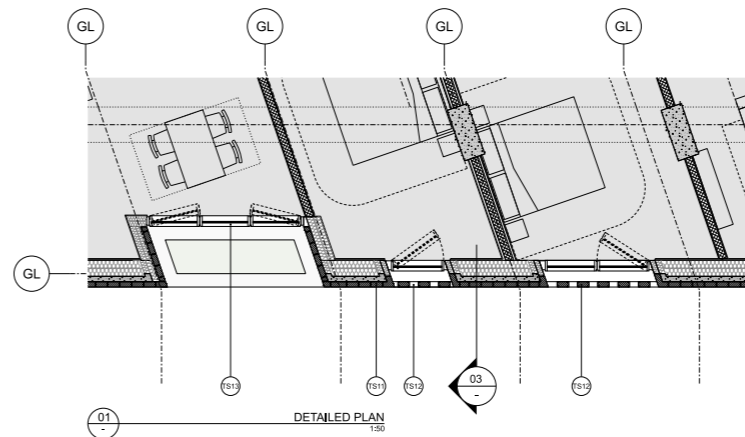
MATERIALS DESCRIPTION - THURLOE STREET

- TS01 Retained existing facade solid elements. Brickwork and stucco to be stripped back and repaired - refer to Julian Harrap Architects Information. Insulation to be added to inside face of wall.
- TS02 Retained existing facade glazed elements. Windows to be replaced with double glazed units - refer to Julian Harrap Architects Information.
- TS03 Proposed new heritage shopfronts. New timber and glass shopfronts modelled on the surviving Medici Gallery at No. 26 Thurloe St. Refer to Julian Harrap Architects Information.
- TS04 External facade balustrades. Solid, painted rendered cast-iron set behind the existing retained facade. White.
- TS05 Top floor flat mansard. Slate tiled inclined roof with insulation behind. Dark grey.
- TS06 Top floor mansard glazing. Full-height double glazing with aluminium sliding door or side hung door system as required. Dark grey. Ventilation zone incorporated above head of window.
- TS07 Top floor mansard slab-edge expression. Dark grey reinforced concrete.
- TS08 Top floor mansard projecting bays. Solid insulated metal panelled cladding, dark grey, with glazed openings (TS06) set within.
- TS09 Roof edge coping. Dark grey.
- TS10 Green roof. Green roof system with PPC aluminium edging and blue roof rainwater attenuation drainage system below. Roof ball-up and growing medium to comply with GRD Design guidance recommendations and Building Regulations Approved Document for fire safety.
- TS11 Solid brick panels. Precast concrete cladding panels with brick facing and insulation behind. Brick colour to match surrounding context.
- TS12 Hi + Miss brick facade. Brickwork veil with openings to allow light and air through gaps. Full-height double glazing with aluminium sliding door or side hung door system as required behind, dark grey. Brick colour to match surrounding context and solid brick panels adjacent.
- TS13 Clear glazing system in setbacks. Full-height double glazing with fixed lower sections and operable top sections in certain areas on restrooms. Dark grey.
- TS14 Insulated aluminium spandrel panel as part of cladding system. Dark grey.
- TS15 Station-facing top floor glazing. Full-height fixed double glazing with aluminium framing, dark grey.
- TS16 Station-facing top floor solid cladding. Full-height flat metal insulated solid panels, dark grey. Framing to match and read as part of same system as TS15.
- TS17 Roof balustrade edge protection, set back from roof edge.
- TS18 Core louvers. Ventilation louvers to core plant enclosure. Silver grey finish.
- TS19 Existing station revetment wall.



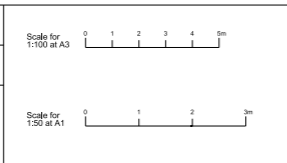
MATERIALS DESCRIPTION - THURLOE STREET

- TS01 Retained existing facade solid elements. Brickwork and stucco to be stripped back and repaired - refer to Julian Harrap Architects Information. Insulation to be added to inside face of wall.
- TS02 Retained existing facade glazed elements. Windows to be replaced with double glazed units - refer to Julian Harrap Architects Information.
- TS03 Proposed new heritage shopfronts. New timber and glass shopfronts modelled on the surviving Medici Gallery at No. 26 Thurloe St. Refer to Julian Harrap Architects Information.
- TS04 External facade balustrades. Solid, painted rendered cast-iron set behind the existing retained facade. White.
- TS05 Top floor flat mansard. Slate tiled inclined roof with insulation behind. Dark grey.
- TS06 Top floor mansard glazing. Full-height double glazing with aluminium sliding door or side hung door system as required. Dark grey. Ventilation zone incorporated above head of window.
- TS07 Top floor mansard slab-edge expression. Dark grey reinforced concrete.
- TS08 Top floor mansard projecting bays. Solid insulated metal panelled cladding, dark grey, with glazed openings (TS06/TS15) set within.
- TS09 Roof edge coping. Dark grey.
- TS10 Green roof. Green roof system with PPC aluminium edging and blue roof rainwater attenuation drainage system below. Roof ball-up and growing medium to comply with GRD Design guidance recommendations and Building Regulations Approved Document for fire safety.
- TS11 Solid brick panels. Precast concrete cladding panels with brick facing and insulation behind. Brick colour to match surrounding context.
- TS12 Hi + Miss brick facade. Brickwork veil with openings to allow light and air through gaps. Full-height double glazing with aluminium sliding door or side hung door system as required behind, dark grey. Brick colour to match surrounding context and solid brick panels adjacent.
- TS13 Clear glazing system in setbacks. Full-height double glazing with fixed lower sections and operable top sections in certain areas on restrooms. Dark grey.
- TS14 Insulated aluminium spandrel panel as part of cladding system. Dark grey.
- TS15 Top floor Station-facing Mansard glazing. Full-height fixed double glazing with aluminium framing, dark grey. Ventilation zone incorporated above head of window.
- TS16 Station-facing top floor solid cladding. Full-height flat metal insulated solid zinc panels with vertical expressed joints. Mid grey colouration to match TS05.
- TS17 Roof balustrade edge protection, set back from roof edge.
- TS18 Core louvers. Ventilation louvers to core plant enclosure. Silver grey finish.
- TS19 Existing station revetment wall.



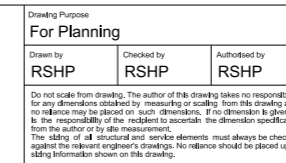
Revision	Date	Description
-	30-03-2020	Planning Issue
P1	04-01-2021	Updated Planning Issue

Drawing Purpose		
For Planning		
Drawn by	Checked by	Authorised by
RSHP	RSHP	RSHP



Project		Drawing Title		Revision	
South Kensington Station		Proposed Detailed Bay Thurloe Street Station-Facing Facade		P1	
Contact Rogers Stirk Harbour + Partners		Drawing Number RSHP-A-04010-D-XX		Revision	
The Leadenhall Building 122 Leadenhall Street London EC3V 4AB		Scale @ A1 Scale @ A3 1:50 1:100		Drawing Date Revision Date 30-03-2020 04-01-2021	

Drawing Purpose		
For Planning		
Drawn by	Checked by	Authorised by
RSHP	RSHP	RSHP



Project		Drawing Title		Revision	
South Kensington Station		Proposed Detailed Bay Thurloe Street Station-Facing Facade		P2	
Contact Rogers Stirk Harbour + Partners		Drawing Number RSHP-A-04010-D-XX		Revision	
The Leadenhall Building 122 Leadenhall Street London EC3V 4AB		Scale @ A1 Scale @ A3 1:50 1:100		Drawing Date Revision Date 30-03-2020 06-08-2021	