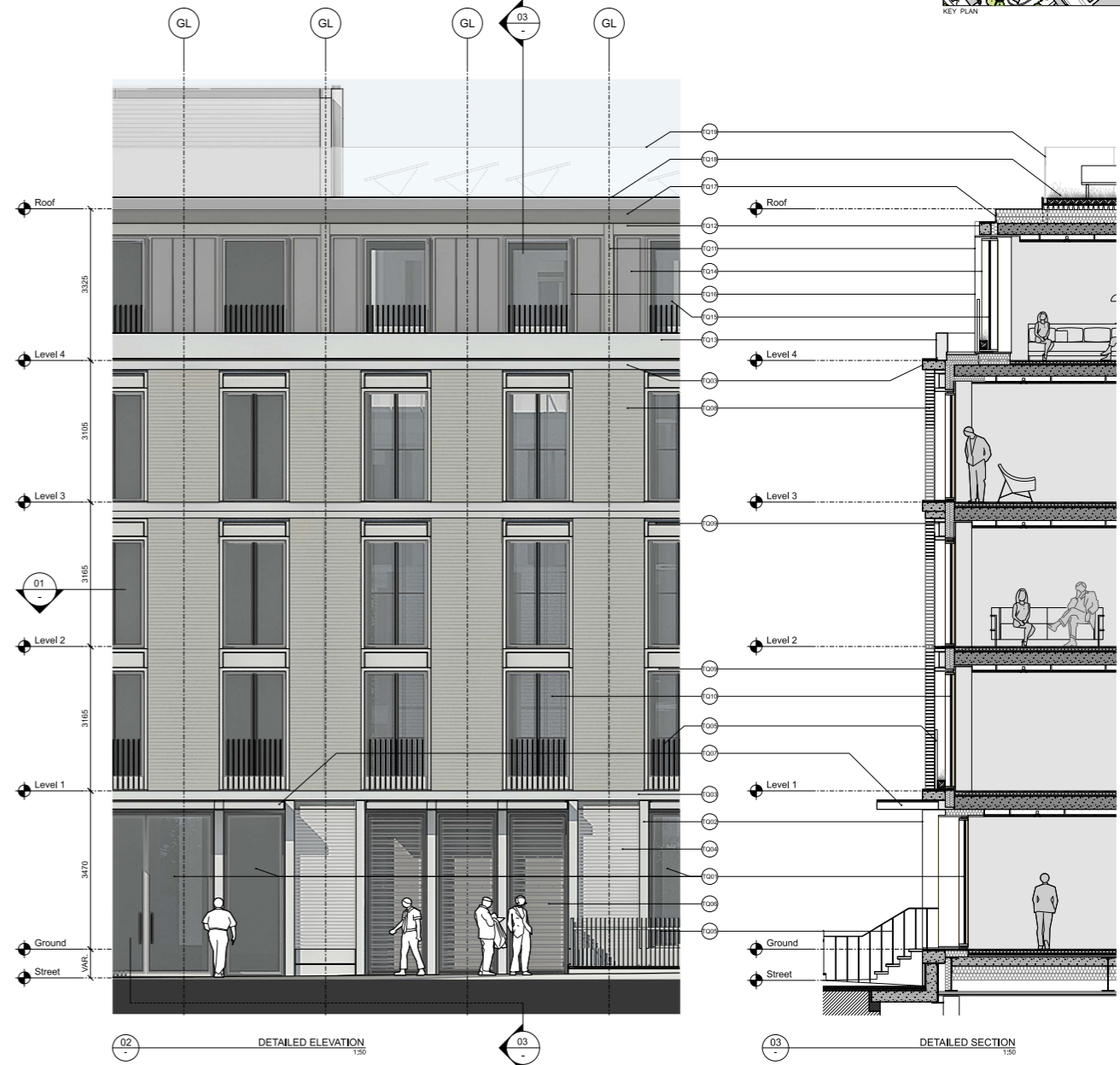


**MATERIALS DESCRIPTION - THURLOE SQUARE**

- TQ01 Ground floor glazing, Full-height clear double glazing with mid silver grey coloured frames. Panels are either fixed clear glazed, fixed back-painted glazed or glazed doors to the residential lobby entrance.
- TQ02 Column expression, Reconstituted stone/precast concrete.
- TQ03 Beam expression, Reconstituted stone/precast concrete.
- TQ04 Ground floor rusticated base, Full-height light coloured reconstituted stone set back behind column face line, with insulation behind. Panels to have channelled joints.
- TQ05 Railings, Painted mild steel railings at similar spacing to surrounding local examples. Dark bronze colour.
- TQ06 Residential fair entrance/Station means of escape self doors, Solid external mid silver grey colour doors with framing to match adjacent ground floor glazing. TQ01. Station MOC doors to have patterned detailing to reference the Bulrose veil metalwork. BMS.
- TQ07 Entrance portico, Reconstituted stone projecting entrance canopy with mid silver grey coloured metal finishing and integrated downlighting for residential entrances as required.
- TQ08 Solid brick cladding, Precast concrete cladding panels with grey/brown brick facing and insulation behind. Brick colour to match surrounding context.
- TQ09 Stone reveals, Reconstituted stone linings/reveals and spandrel panels set back in plane behind the brickwork panels of TQ08.
- TQ10 Clear residential glazing, Full-height clear double glazing with mid silver grey coloured frames. First floor street-facing glazing is operable behind the railings, the second and third floor are fixed.
- TQ11 Top floor column expression, Reconstituted dark grey stone/precast concrete.
- TQ12 Top floor beam expression, Reconstituted dark grey stone/precast concrete.
- TQ13 Top floor parapet wall, Reconstituted stone/precast concrete setback parapet wall.
- TQ14 Top floor side cladding, Full-height zinc cladding panels with vertical expressed joints and insulation behind within mid silver grey coloured frames.
- TQ15 Projecting window bay frames, Cladding frames to sit within deeper projecting outer frame with lighter silver grey colour, aligned with structural column/beam line.
- TQ16 Roof edge coping, Dark grey aluminium.
- TQ17 Green roof, Green roof system with metal edging and blue roof rainwater attenuation drainage system below. Roof built-up and growing mediums to comply with GRD Design guidance recommendations and Building Regulations Approved Document for fire safety.
- TQ18 Roof balustrade edge protection, set back from roof edge.
- TQ19 Core solid walls, Insulated solid flank walls to lift and stair shafts with reconstituted stone cladding.
- TQ20 Core louvers, Ventilation louvers to core plant enclosure. Silver grey finish.

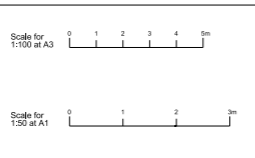


**MATERIALS DESCRIPTION - THURLOE SQUARE**

- TQ01 Ground floor glazing, Full-height clear double glazing with mid silver grey coloured frames. Panels are either fixed clear glazed, fixed back-painted glazed or glazed doors to the residential lobby entrance.
- TQ02 Column expression, Reconstituted stone/precast concrete.
- TQ03 Beam expression, Reconstituted stone/precast concrete.
- TQ04 Ground floor rusticated base, Full-height light coloured reconstituted stone set back behind column face line, with insulation behind. Panels to have channelled joints.
- TQ05 Railings, Painted mild steel railings at similar spacing to surrounding local examples. Dark bronze colour.
- TQ06 Residential fair entrance/Station means of escape self doors, Solid external mid silver grey colour doors with framing to match adjacent ground floor glazing. TQ01. Station MOC doors to have patterned detailing to reference the Bulrose veil metalwork. BMS.
- TQ07 Entrance portico, Reconstituted stone projecting entrance canopy with mid silver grey coloured metal finishing and integrated downlighting for residential entrances as required.
- TQ08 Solid brick cladding, Precast concrete cladding panels with grey/brown brick facing and insulation behind. Brick colour to match surrounding context.
- TQ09 Stone reveals, Reconstituted stone linings/reveals and spandrel panels set back in plane behind the brickwork panels of TQ08.
- TQ10 Clear residential glazing, Full-height clear double glazing with mid silver grey coloured frames. First floor street-facing glazing is operable behind the railings, the second and third floor are fixed.
- TQ11 Top floor column expression, Reconstituted dark grey stone/precast concrete.
- TQ12 Top floor beam expression, Reconstituted dark grey stone/precast concrete.
- TQ13 Top floor parapet wall, Reconstituted stone/precast concrete setback parapet wall.
- TQ14 Top floor side cladding, Full-height zinc cladding panels with vertical expressed joints and insulation behind within mid silver grey coloured frames.
- TQ15 Top floor clear glazing, Full-height double glazing with mid silver grey coloured frames to match TQ13.
- TQ16 Projecting window bay frames, Cladding frames to sit within deeper projecting outer frame with lighter silver grey colour, aligned with structural column/beam line.
- TQ17 Roof edge coping, Dark grey aluminium.
- TQ18 Green roof, Green roof system with metal edging and blue roof rainwater attenuation drainage system below. Roof built-up and growing mediums to comply with GRD Design guidance recommendations and Building Regulations Approved Document for fire safety.
- TQ19 Roof balustrade edge protection, set back from roof edge.
- TQ20 Core solid walls, Insulated solid flank walls to lift and stair shafts with reconstituted stone cladding.
- TQ21 Core louvers, Ventilation louvers to core plant enclosure. Silver grey finish.

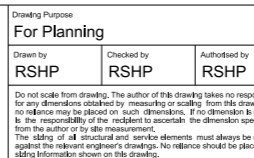
Revision	Date	Description
-	30-03-2020	Planning Issue
P1	04-01-2021	Updated Planning Issue

Drawing Purpose		
For Planning		
Drawn by	Checked by	Authorised by
RSHP	RSHP	RSHP



Project		Drawing Title		Drawing Number		Revision	
South Kensington Station		Proposed Detailed Bay Thurloe Square Street-Facing Facade		RSHP-A-04005-D-XX		P1	
Contact: Rogers Stirk Harbour + Partners		Scale @ A1: 1:50, Scale @ A3: 1:100		Drawing Date: 30-03-2020		Revision Date: 04-01-2021	

Drawing Purpose		
For Planning		
Drawn by	Checked by	Authorised by
RSHP	RSHP	RSHP



Project		Drawing Title		Drawing Number		Revision	
South Kensington Station		Proposed Detailed Bay Thurloe Square Street-Facing Facade		RSHP-A-04005-D-XX		P2	
Contact: Rogers Stirk Harbour + Partners		Scale @ A1: 1:50, Scale @ A3: 1:100		Drawing Date: 30-03-2020		Revision Date: 06-08-2021	