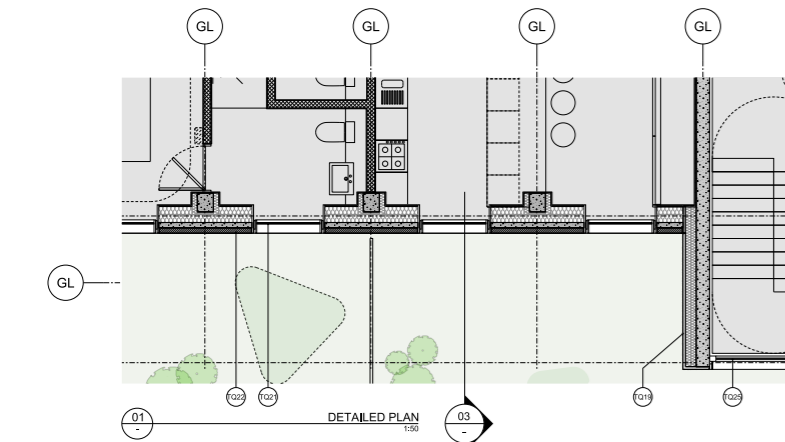




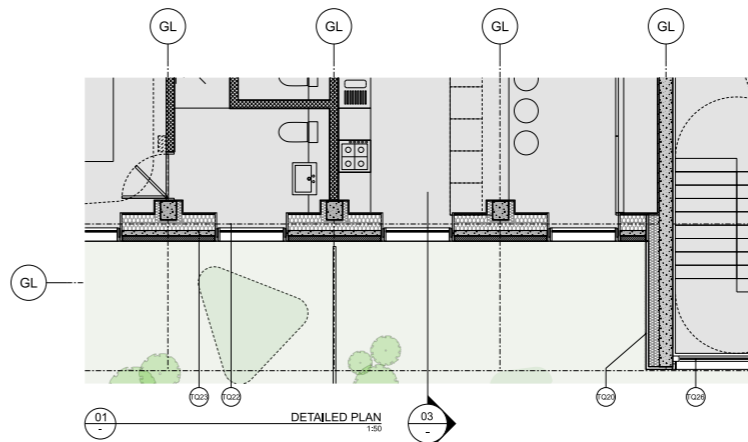
**MATERIALS DESCRIPTION - THURLOE SQUARE**

- [For street-facing facade materials TQ01-09 refer to drawing RSHP-A-04005-D-XX]
- TQ10 Clear residential glazing. Full-height clear double glazing with mid silver grey coloured frames. First floor street-facing glazing to operate behind the railings, the second and third floor are fixed.
- TQ11 Top floor column expression. Reconstituted dark grey stone/precast concrete.
- TQ12 Top floor beam expression. Reconstituted dark grey stone/precast concrete.
- TQ13 Top floor solid cladding. Full-height zinc cladding panels with vertical expressed joints and insulation behind within mid silver grey coloured frames.
- TQ14 Top floor clear glazing. Full-height double glazing with mid silver grey coloured frames to match TQ13.
- TQ15 Projecting window bay frames. Cladding frames to sit within deeper projecting outer frame with lighter silver grey colour, aligned with structural column/beam line.
- TQ16 Roof edge coping. Dark grey aluminium.
- TQ17 Green roof. Green roof system with metal edging and blue roof rainwater attenuation drainage system below. Roof build-up and growing medium to comply with GPO Design guidance recommendations and Building Regulations Approved Document for the safety.
- TQ18 Roof balustrade edge protection. Set back from roof edge.
- TQ19 Core solid walls. Insulated solid flank walls to fit and stair shafts with reconstituted stone cladding.
- TQ20 Core louvers. Ventilation louvers to core slant enclosures. Silver grey finish.
- TQ21 Station-facing glazing. Clear double glazing with silver grey coloured frames. Panels split at balustrade height with operable upper and fixed lower sections. Split section at the head to incorporate air intake/exhaust louvers.
- TQ22 Station-facing solid brick panels. Precast concrete cladding panels with brick facing and insulation behind set within silver grey coloured frames. Brick colour to match surrounding context and equivalent brickwork on adjoining elevation of the proposed Palham St building.
- TQ23 Station-facing top floor clear glazing. Double glazing with silver grey coloured frames. Split section at the head to incorporate air intake/exhaust louvers.
- TQ24 Station-facing top floor solid brick panels. Precast concrete cladding panels with brick facing and insulation behind set within silver grey coloured frames. Dark grey coloured brick.
- TQ25 Core glazing. Full height double glazing with silver grey coloured frames. AOV's to be incorporated to lobby areas as required for smoke ventilation.
- TQ26 Core end wall solid cladding. Solid insulated metal panel faced with reconstituted stone slabs within silver grey coloured frames.
- TQ27 Soft Treatment. Insulated render, light grey colour.



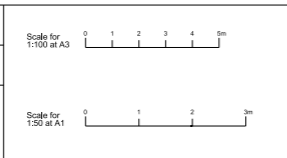
**MATERIALS DESCRIPTION - THURLOE SQUARE**

- [For street-facing facade materials TQ01-09 refer to drawing RSHP-A-04005-D-XX]
- TQ10 Clear residential glazing. Full-height clear double glazing with mid silver grey coloured frames. First floor street-facing glazing to operate behind the railings, the second and third floor are fixed.
- TQ11 Top floor column expression. Reconstituted dark grey stone/precast concrete.
- TQ12 Top floor beam expression. Reconstituted dark grey stone/precast concrete.
- TQ13 Top floor parapet wall. Reconstituted stone/precast concrete setback parapet wall.
- TQ14 Top floor solid cladding. Full-height zinc cladding panels with vertical expressed joints and insulation behind within mid silver grey coloured frames.
- TQ15 Top floor clear glazing. Full-height double glazing with mid silver grey coloured frames to match TQ13.
- TQ16 Projecting window bay frames. Cladding frames to sit within deeper projecting outer frame with lighter silver grey colour, aligned with structural column/beam line.
- TQ17 Roof edge coping. Dark grey aluminium.
- TQ18 Green roof. Green roof system with metal edging and blue roof rainwater attenuation drainage system below. Roof build-up and growing medium to comply with GPO Design guidance recommendations and Building Regulations Approved Document for the safety.
- TQ19 Roof balustrade edge protection. Set back from roof edge.
- TQ20 Core solid walls. Insulated solid flank walls to fit and stair shafts with reconstituted stone cladding.
- TQ21 Core louvers. Ventilation louvers to core slant enclosures. Silver grey finish.
- TQ22 Station-facing glazing. Clear double glazing with silver grey coloured frames. Panels split at balustrade height with operable upper and fixed lower sections. Split section at the head to incorporate air intake/exhaust louvers.
- TQ23 Station-facing solid brick panels. Precast concrete cladding panels with brick facing and insulation behind set within silver grey coloured frames. Brick colour to match surrounding context and equivalent brickwork on adjoining elevation of the proposed Palham St building.
- TQ24 Station-facing top floor clear glazing. Double glazing with silver grey coloured frames. Split section at the head to incorporate air intake/exhaust louvers.
- TQ25 Station-facing top floor solid brick panels. Precast concrete cladding panels with brick facing and insulation behind set within silver grey coloured frames. Dark grey coloured brick.
- TQ26 Core glazing. Full height double glazing with silver grey coloured frames. AOV's to be incorporated to lobby areas as required for smoke ventilation.
- TQ27 Core end wall solid cladding. Solid insulated metal panel faced with reconstituted stone slabs within silver grey coloured frames.
- TQ28 Soft Treatment. Insulated render, light grey colour.



Revision	Date	Description
-	30-03-2020	Planning Issue
P1	04-01-2021	Updated Planning Issue

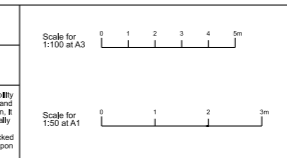
Drawing Purpose		
For Planning		
Drawn by	Checked by	Authorised by
RSHP	RSHP	RSHP



Project		Drawing Title		Revision	
South Kensington Station		Proposed Detailed Bay Thurloe Square Station-Facing Facade		P1	
Contact Rogers Stirk Harbour + Partners		Drawing Number RSHP-A-04015-D-XX		Revision	
The Leadenhall Building 122 Leadenhall Street London EC3V 4AB		Scale @ A1 Scale @ A3 1:50 1:100		Drawing Date 30-03-2020	
Tel: 020 7385 1235 Fax: 020 7385 8409 email: 11460@rshp-6.com www.rshp.com		Revision Date 04-01-2021			

Drawing Purpose		
For Planning		
Drawn by	Checked by	Authorised by
RSHP	RSHP	RSHP

Project		Drawing Title		Revision	
South Kensington Station		Proposed Detailed Bay Thurloe Square Station-Facing Facade		P2	
Contact Rogers Stirk Harbour + Partners		Drawing Number RSHP-A-04015-D-XX		Revision	
The Leadenhall Building 122 Leadenhall Street London EC3V 4AB		Scale @ A1 Scale @ A3 1:50 1:100		Drawing Date 30-03-2020	
Tel: 020 7385 1235 Fax: 020 7385 8409 email: 11460@rshp-6.com www.rshp.com		Revision Date 06-08-2021			



Project		Drawing Title		Revision	
South Kensington Station		Proposed Detailed Bay Thurloe Square Station-Facing Facade		P2	
Contact Rogers Stirk Harbour + Partners		Drawing Number RSHP-A-04015-D-XX		Revision	
The Leadenhall Building 122 Leadenhall Street London EC3V 4AB		Scale @ A1 Scale @ A3 1:50 1:100		Drawing Date 30-03-2020	
Tel: 020 7385 1235 Fax: 020 7385 8409 email: 11460@rshp-6.com www.rshp.com		Revision Date 06-08-2021			