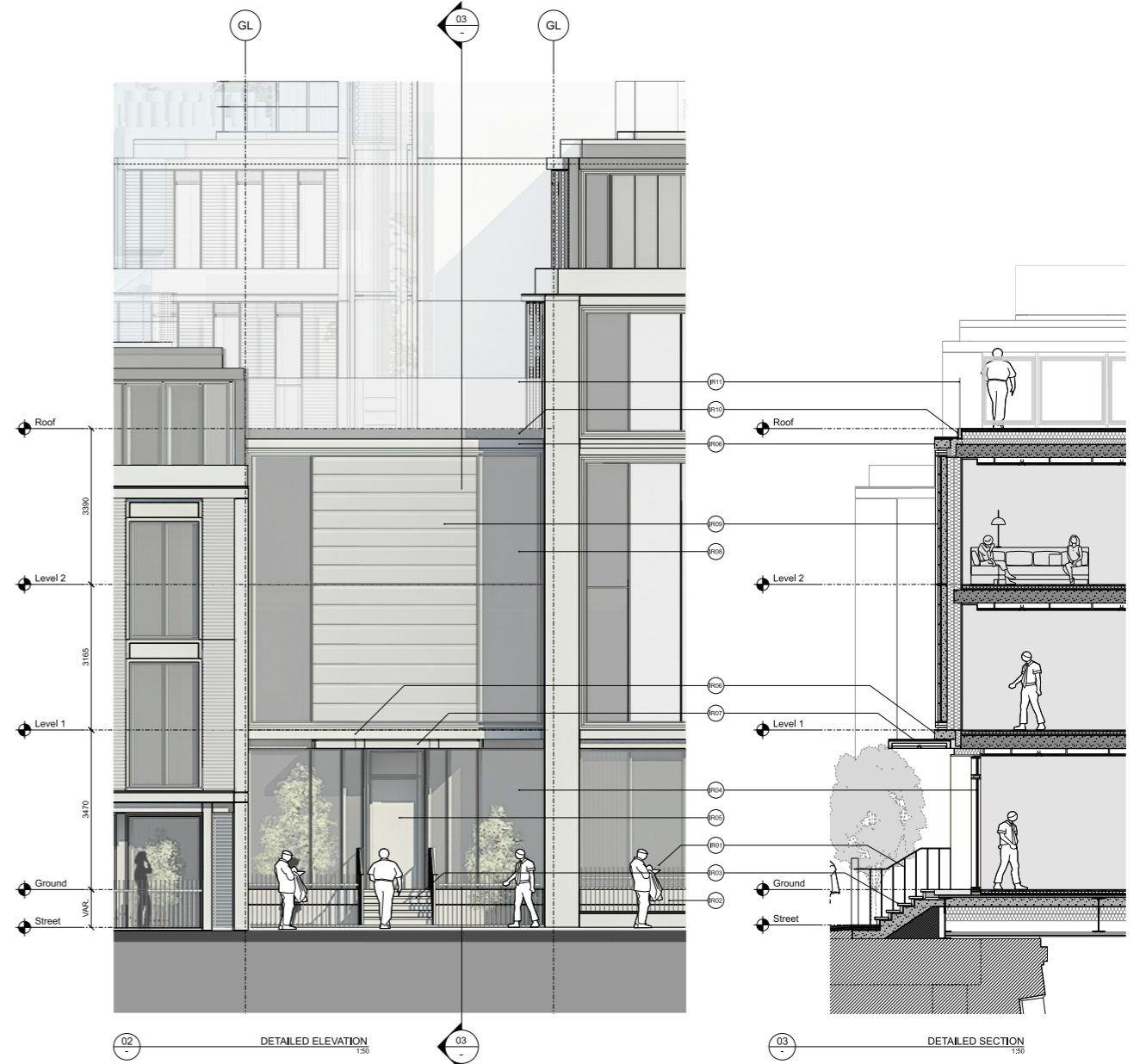


MATERIALS DESCRIPTION - PELHAM ST. INFILL RESIDENTIAL

- IR01 Railings. Painted mild steel railings at similar spacing to surrounding local examples. Including balustrades up to residential entrance steps. Dark bronze.
- IR02 Level-change upstand. Reconstituted stone ground floor slab expression and tiling to change in level down to street level.
- IR03 Entrance steps. Reconstituted stone steps up to raised ground floor residential entrance.
- IR04 Ground floor glazing. Full-height clear double glazing with dark bronze coloured frames. Panels are either level clear glazing or fixed back-painted glazing.
- IR05 Residential flat entrance doors. Solid external doors with mild silver grey colour framing to match adjacent ground floor glazing. IR04. Framing to be full height, with matching overpanel above doors as indicated.
- IR06 Beam expression. Reconstituted stone/precast concrete.
- IR07 Entrance portico. Reconstituted stone projecting entrance canopy with mild silver grey coloured metal balustrading and integrated downlighting for residential entrance as required.
- IR08 Clear residential glazing. Full-height clear double glazing with mild silver grey coloured frames.
- IR09 Solid reconstituted stone cladding. Full-height precast concrete cladding panels with reconstituted stone facing and insulation behind. Mild silver grey coloured frames.
- IR10 Roof edge coping. Dark grey aluminium.
- IR11 Roof balustrade.

NB: Station-facing facade for this Infill building has not been represented in a 'Detailed Bay' drawing. The facade side-glazing arrangement is the same as represented here in this street-facing facade, as are the materials proposed.



MATERIALS DESCRIPTION - PELHAM ST. INFILL RESIDENTIAL

- IR01 Railings. Painted mild steel railings at similar spacing to surrounding local examples. Including balustrades up to residential entrance steps. Dark bronze.
- IR02 Level-change upstand. Reconstituted stone ground floor slab expression and tiling to change in level down to street level.
- IR03 Entrance steps. Reconstituted stone steps up to raised ground floor residential entrance.
- IR04 Ground floor glazing. Full-height clear double glazing with dark bronze coloured frames. Panels are either level clear glazing or fixed back-painted glazing.
- IR05 Residential flat entrance doors. Solid external doors with mild silver grey colour framing to match adjacent ground floor glazing. IR04. Framing to be full height, with matching overpanel above doors as indicated.
- IR06 Beam expression. Reconstituted stone/precast concrete.
- IR07 Entrance portico. Reconstituted stone projecting entrance canopy with mild silver grey coloured metal balustrading and integrated downlighting for residential entrance as required.
- IR08 Clear residential glazing. Full-height clear double glazing with mild silver grey coloured frames.
- IR09 Solid reconstituted stone cladding. Full-height precast concrete cladding panels with reconstituted stone facing and insulation behind. Mild silver grey coloured frames.
- IR10 Roof edge coping. Dark grey aluminium.
- IR11 Roof balustrade.

NB: Station-facing facade for this Infill building has not been represented in a 'Detailed Bay' drawing. The facade side-glazing arrangement is the same as represented here in this street-facing facade, as are the materials proposed.

Revision	Date	Description	Drawing Purpose
-	30-03-2020	Planning Issue	For Planning
P1	04-01-2021	Updated Planning Issue	

Drawn by RSHP	Checked by RSHP	Authorized by RSHP
-------------------------	---------------------------	------------------------------

Project South Kensington Station	Drawing Title Proposed Detailed Bay Pelham Street Infill Building Street-Facing Facade
Contact Rogers Stirk Harbour + Partners	Drawing Number RSHP-A-04006-D-XX
The Leadenhall Building 122 Leadenhall Street London EC3V 4AB	Revision P1
tel: 020 7385 1235 fax: 020 7385 8409 email: 111-460@rshp-6.com www.rshp.com	Scale @ A1 1:50
	Scale @ A3 1:100
	Drawing Date 30-03-2020
	Revision Date 04-01-2021

Revision	Date	Description	Drawing Purpose
-	30-03-2020	Planning Issue	For Planning
P1	04-01-2021	Updated Planning Issue	
P2	06-06-2021	Updated Planning Issue	

Drawn by RSHP	Checked by RSHP	Authorized by RSHP
-------------------------	---------------------------	------------------------------

Project South Kensington Station	Drawing Title Proposed Detailed Bay Pelham Street Infill Building Street-Facing Facade
Contact Rogers Stirk Harbour + Partners	Drawing Number RSHP-A-04006-D-XX
The Leadenhall Building 122 Leadenhall Street London EC3V 4AB	Revision P2
tel: 020 7385 1235 fax: 020 7385 8409 email: 111-460@rshp-6.com www.rshp.com	Scale @ A1 1:50
	Scale @ A3 1:100
	Drawing Date 30-03-2020
	Revision Date 06-08-2021