

MATERIALS DESCRIPTION - PELHAM STREET COMMERCIAL

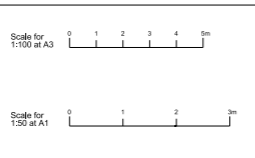
- PC01 Ground Floor retail glazing. Full-height double glazing with mid silver grey coloured frames and glazed doors.
- PC02 Column expression. Reconstituted stone/precast concrete.
- PC03 Beam expression. Reconstituted stone/precast concrete.
- PC04 Bay front cladding. Red bricks with silver grey coloured frames with solid insulated panel behind.
- PC05 Bay side glazing. Double glazing with mid silver grey coloured frames.
- PC06 Top floor column expression. Reconstituted dark grey stone/precast concrete.
- PC07 Top floor beam expression. Reconstituted dark grey stone/precast concrete.
- PC08 Top floor clear glazing. Full-height double glazing with mid silver grey coloured frames.
- PC09 Top floor solid cladding. Full-height insulated dark grey aluminium panel, set behind clear glass, with mid silver grey coloured frames.
- PC10 Roof edge coping. Dark grey aluminium.
- PC11 Green roof. Green roof system with metal edging and blue roof rainwater attenuation drainage system below. Roof built-up and growing mediums to comply with GRD Design guidance recommendations and Building Regulations Approved Document for the safety.
- PC12 Station Facing Roof/rear access walkway balustrade. Flat steel bar edge protection, set back from roof edge.
- PC13 Core steel-facing glazing. Full-height double glazing with mid silver grey coloured frames. Aluminium solar shading louvers to central bays, silver grey to lower floors and dark grey to top floor.
- PC14 Core louvers. Ventilation louvers to core plant enclosure. Silver grey finish.
- PC15 Core solid walls. Insulated solid flank walls to lift and stair shafts with reconstituted stone cladding and plaster set within.
- PC16 Rear access walkway. Downstand at the base of the rear facade with reconstituted stone/precast concrete cladding and plaster set within.
- PC17 Station-facing clear glazing. Double glazing with silver grey coloured frames. Split section at the head to incorporate air break/insect screens or back-swinging glass panel depending on location.
- PC18 Station-facing clear glazing with surface treatment. Full-height double glazing with silver grey coloured frames. Fin/texture lines at brick cladding to reference the adjacent masonry facades.
- PC19 Station-facing top floor clear glazing. Full-height double glazing with deep silver grey coloured frames.
- PC20 Station-facing solid brick panels. Precast concrete cladding panels with brick facing and insulation behind. Brick colour to match surrounding context.
- PC21 Station-facing core glazing. Double glazing with silver grey coloured frames. Panels split at balustrade height with fixed lower sections and opening transoms above (split sections to allow clearing from trains).

MATERIALS DESCRIPTION - PELHAM STREET COMMERCIAL

- PC01 Ground Floor retail glazing. Full-height double glazing with mid silver grey coloured frames and glazed doors.
- PC02 Column expression. Reconstituted stone/precast concrete.
- PC03 Beam expression. Reconstituted stone/precast concrete.
- PC04 Bay front cladding. Red bricks with silver grey coloured frames with solid insulated panel behind.
- PC05 Bay side glazing. Double glazing with mid silver grey coloured frames.
- PC06 Top floor column expression. Reconstituted dark grey stone/precast concrete.
- PC07 Top floor beam expression. Reconstituted dark grey stone/precast concrete.
- PC08 Top floor clear glazing. Full-height double glazing with mid silver grey coloured frames.
- PC09 Top floor solid cladding. Full-height insulated dark grey aluminium panel, set behind clear glass, with mid silver grey coloured frames.
- PC10 Roof edge coping. Dark grey aluminium.
- PC11 Green roof. Green roof system with metal edging and blue roof rainwater attenuation drainage system below. Roof built-up and growing mediums to comply with GRD Design guidance recommendations and Building Regulations Approved Document for the safety.
- PC12 Station Facing Roof/rear access walkway balustrade. Flat steel bar edge protection, set back from roof edge.
- PC13 Core steel-facing glazing. Full-height double glazing with mid silver grey coloured frames. Aluminium solar shading louvers to central bays, silver grey to lower floors and dark grey to top floor.
- PC14 Core louvers. Ventilation louvers to core plant enclosure. Silver grey finish.
- PC15 Core solid walls. Insulated solid flank walls to lift and stair shafts with reconstituted stone cladding and plaster set within.
- PC16 Rear access walkway. Downstand at the base of the rear facade with reconstituted stone/precast concrete cladding and plaster set within.
- PC17 Station-facing clear glazing. Double glazing with silver grey coloured frames. Split section at the head to incorporate air break/insect screens or back-swinging glass panel depending on location.
- PC18 Station-facing clear glazing with surface treatment. Full-height double glazing with silver grey coloured frames. Fin/texture lines at brick cladding to reference the adjacent masonry facades.
- PC19 Station-facing top floor clear glazing. Full-height double glazing with deep silver grey coloured frames.
- PC20 Station-facing solid brick panels. Precast concrete cladding panels with brick facing and insulation behind. Brick colour to match surrounding context.
- PC21 Station-facing core glazing. Double glazing with silver grey coloured frames. Panels split at balustrade height with fixed lower sections and opening transoms above (split sections to allow clearing from trains).

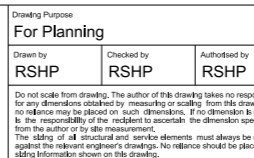
Revision	Date	Description
-	30-03-2020	Planning Issue
P1	04-01-2021	Updated Planning Issue

Drawing Purpose		
For Planning		
Drawn by	Checked by	Authorised by
RSHP	RSHP	RSHP



Project		Drawing Title		Drawing Number		Revision	
South Kensington Station		Proposed Detailed Bay Pelham Street Office Station-Facing Facade		RSHP-A-04012-D-XX		P1	
Contract: Rogers Stirk Harbour + Partners		Scale @ A1: 1:50, Scale @ A3: 1:100		Drawing Date: 30-03-2020		Revision Date: 04-01-2021	

Drawing Purpose		
For Planning		
Drawn by	Checked by	Authorised by
RSHP	RSHP	RSHP



Project		Drawing Title		Drawing Number		Revision	
South Kensington Station		Proposed Detailed Bay Pelham Street Office Station-Facing Facade		RSHP-A-04012-D-XX		P2	
Contract: Rogers Stirk Harbour + Partners		Scale @ A1: 1:50, Scale @ A3: 1:100		Drawing Date: 30-03-2020		Revision Date: 06-08-2021	