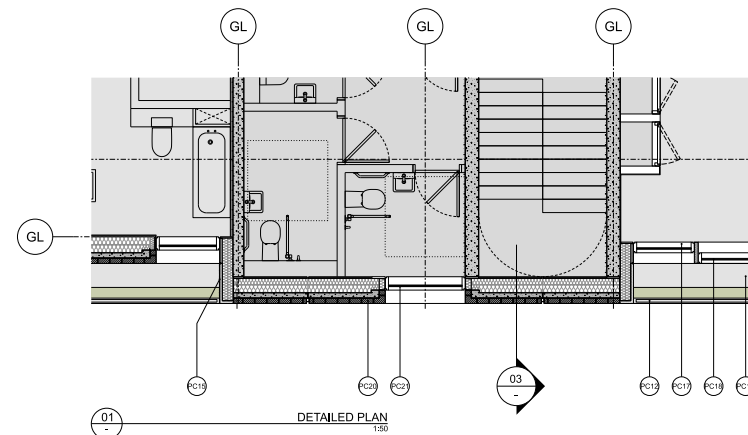
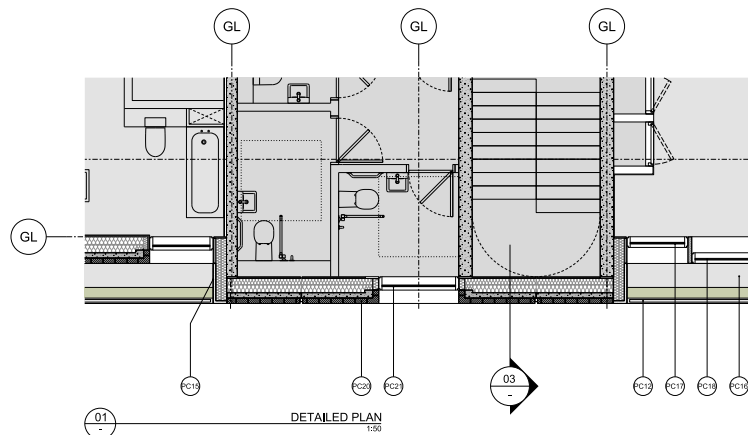


MATERIALS DESCRIPTION - PELHAM STREET CORES

- PC01 Ground Floor glazing. Full-height double glazing with mid silver grey coloured frames and glazed doors. End panels on both sides are back-painted.
- PC02 Column expression. Reconstituted stone/precast concrete.
- PC03 Beam expression. Reconstituted stone/precast concrete.
- PC04 Bay front cladding. Red bricks with silver grey coloured frames with solid insulated panel behind.
- PC05 Bay side glazing. Double glazing with mid silver grey coloured frames.
- PC06 Top floor column expression. Reconstituted dark grey stone/precast concrete.
- PC07 Top floor beam expression. Reconstituted dark grey stone/precast concrete.
- PC08 Top floor clear glazing. Full-height double glazing with deep mid silver grey coloured frames.
- PC09 Top floor solid cladding. Full-height insulated dark grey aluminium panel, set behind clear glass, with mid silver grey coloured frames.
- PC10 Roof edge coping. Dark grey aluminium.
- PC11 Green roof. Green roof system with metal edging and blue roof rainwater attenuation drainage system below. Roof bulk-up and growing medium to comply with GRO Design guidance recommendations and Building Regulations Approved Document for fire safety.
- PC12 Roof balustrade edge protection. Set back from roof edge.
- PC13 Core street-facing glazing. Full-height double glazing with mid silver grey coloured frames. Aluminium solar shading louvers to central bays, silver grey to lower floors and dark grey to top floor.
- PC14 Core louvers. Ventilation louvers to core plant enclosure. Silver grey finish.
- PC15 Core solid walls. Insulated solid flank walls to lift and stair shafts with reconstituted stone cladding.
- PC16 Rear access walkway. Downstand at the base of the rear facade with reconstituted stone/precast concrete cladding and glazing set within.
- PC17 Station-facing clear glazing. Double glazing with silver grey coloured frames. Sill section at the head to incorporate air intake/exhaust louvers or back-painted glass panel depending on location.
- PC18 Station-facing clear glazing with surface treatment. Full-height double glazing with silver grey coloured frames. Finish texture lines at brick spacing to reference the adjacent masonry finishes.
- PC19 Station-facing top floor clear glazing. Full-height double glazing with deep silver grey coloured frames.
- PC20 Station-facing solid brick panels. Precast concrete cladding panels with brick facing and insulation behind. Brick colour to match surrounding context.
- PC21 Station-facing core glazing. Double glazing with silver grey coloured frames. Panels sill at balustrade height with fixed lower sections and opening reversible pivoting upper sections to allow clearing from inside.

MATERIALS DESCRIPTION - PELHAM STREET CORES

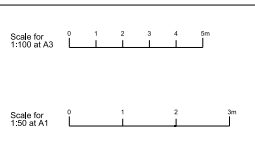
- PC01 Ground Floor glazing. Full-height double glazing with mid silver grey coloured frames and glazed doors. End panels on both sides are back-painted.
- PC02 Column expression. Reconstituted stone/precast concrete.
- PC03 Beam expression. Reconstituted stone/precast concrete.
- PC04 Bay front cladding. Red bricks with silver grey coloured frames with solid insulated panel behind.
- PC05 Bay side glazing. Double glazing with mid silver grey coloured frames.
- PC06 Top floor column expression. Reconstituted dark grey stone/precast concrete.
- PC07 Top floor beam expression. Reconstituted dark grey stone/precast concrete.
- PC08 Top floor clear glazing. Full-height double glazing with deep mid silver grey coloured frames.
- PC09 Top floor solid cladding. Full-height insulated dark grey aluminium panel, set behind clear glass, with mid silver grey coloured frames.
- PC10 Roof edge coping. Dark grey aluminium.
- PC11 Green roof. Green roof system with metal edging and blue roof rainwater attenuation drainage system below. Roof bulk-up and growing medium to comply with GRO Design guidance recommendations and Building Regulations Approved Document for fire safety.
- PC12 Roof balustrade edge protection. Set back from roof edge.
- PC13 Core street-facing glazing. Full-height double glazing with mid silver grey coloured frames. Aluminium solar shading louvers to central bays, silver grey to lower floors and dark grey to top floor.
- PC14 Core louvers. Ventilation louvers to core plant enclosure. Silver grey finish.
- PC15 Core solid walls. Insulated solid flank walls to lift and stair shafts with reconstituted stone cladding.
- PC16 Rear access walkway. Downstand at the base of the rear facade with reconstituted stone/precast concrete cladding and glazing set within.
- PC17 Station-facing clear glazing. Double glazing with silver grey coloured frames. Sill section at the head to incorporate air intake/exhaust louvers or back-painted glass panel depending on location.
- PC18 Station-facing clear glazing with surface treatment. Full-height double glazing with silver grey coloured frames. Finish texture lines at brick spacing to reference the adjacent masonry finishes.
- PC19 Station-facing top floor clear glazing. Full-height double glazing with deep silver grey coloured frames.
- PC20 Station-facing solid brick panels. Precast concrete cladding panels with brick facing and insulation behind. Brick colour to match surrounding context.
- PC21 Station-facing core glazing. Double glazing with silver grey coloured frames. Panels sill at balustrade height with fixed lower sections and opening reversible pivoting upper sections to allow clearing from inside.



Revision	Date	Description	Drawing Purpose
-	30-03-2020	Planning Issue	For Planning
P1	04-01-2021	Updated Planning Issue	

Drawn by	Checked by	Authorised by
RSHP	RSHP	RSHP

Do not scale from drawing. The author of this drawing takes no responsibility for any dimensions obtained by measuring or scaling from this drawing and no reliance may be placed on such dimensions. If no dimension is given it is the responsibility of the resident to ascertain the dimension specifically from the author or by site measurement. The sizing of all structural and service elements must always be checked against the relevant engineer's drawings. No reliance should be placed upon scaling information shown on this drawing.

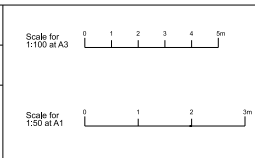


Project	South Kensington Station	Drawing Title	Proposed Detailed Bay Pelham Street Core Station-Facing Facade
Contact	Rogers Stirk Harbour + Partners	Drawing Number	RSHP-A-04013-D-XX
The Leadenhall Building 122 Leadenhall Street London EC3V 4AB	tel: 020 7385 1235 fax: 020 7385 8409 email: 111-460@rshp.com www.rshp.com	Scale @ A1	Scale @ A3
		1:50	1:100
		30-03-2020	04-01-2021

Revision	Date	Description	Drawing Purpose
-	30-03-2020	Planning Issue	For Planning
P1	04-01-2021	Updated Planning Issue	
P2	06-06-2021	Updated Planning Issue	

Drawn by	Checked by	Authorised by
RSHP	RSHP	RSHP

Do not scale from drawing. The author of this drawing takes no responsibility for any dimensions obtained by measuring or scaling from this drawing and no reliance may be placed on such dimensions. If no dimension is given it is the responsibility of the resident to ascertain the dimension specifically from the author or by site measurement. The sizing of all structural and service elements must always be checked against the relevant engineer's drawings. No reliance should be placed upon scaling information shown on this drawing.



Project	South Kensington Station	Drawing Title	Proposed Detailed Bay Pelham Street Core Station-Facing Facade
Contact	Rogers Stirk Harbour + Partners	Drawing Number	RSHP-A-04013-D-XX
The Leadenhall Building 122 Leadenhall Street London EC3V 4AB	tel: 020 7385 1235 fax: 020 7385 8409 email: 111-460@rshp.com www.rshp.com	Scale @ A1	Scale @ A3
		1:50	1:100
		30-03-2020	06-08-2021