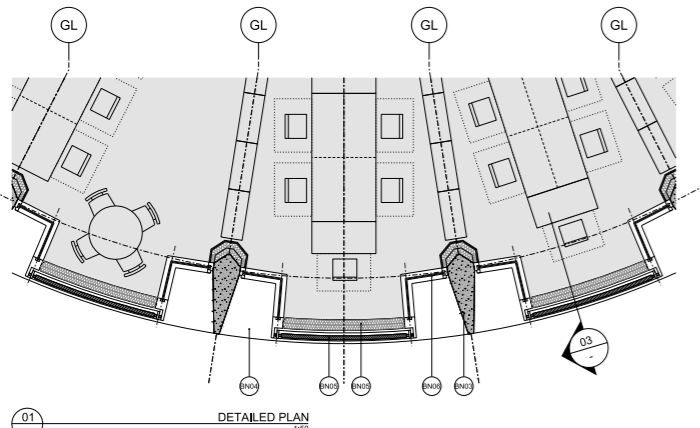


02 DETAILED ELEVATION 1:50

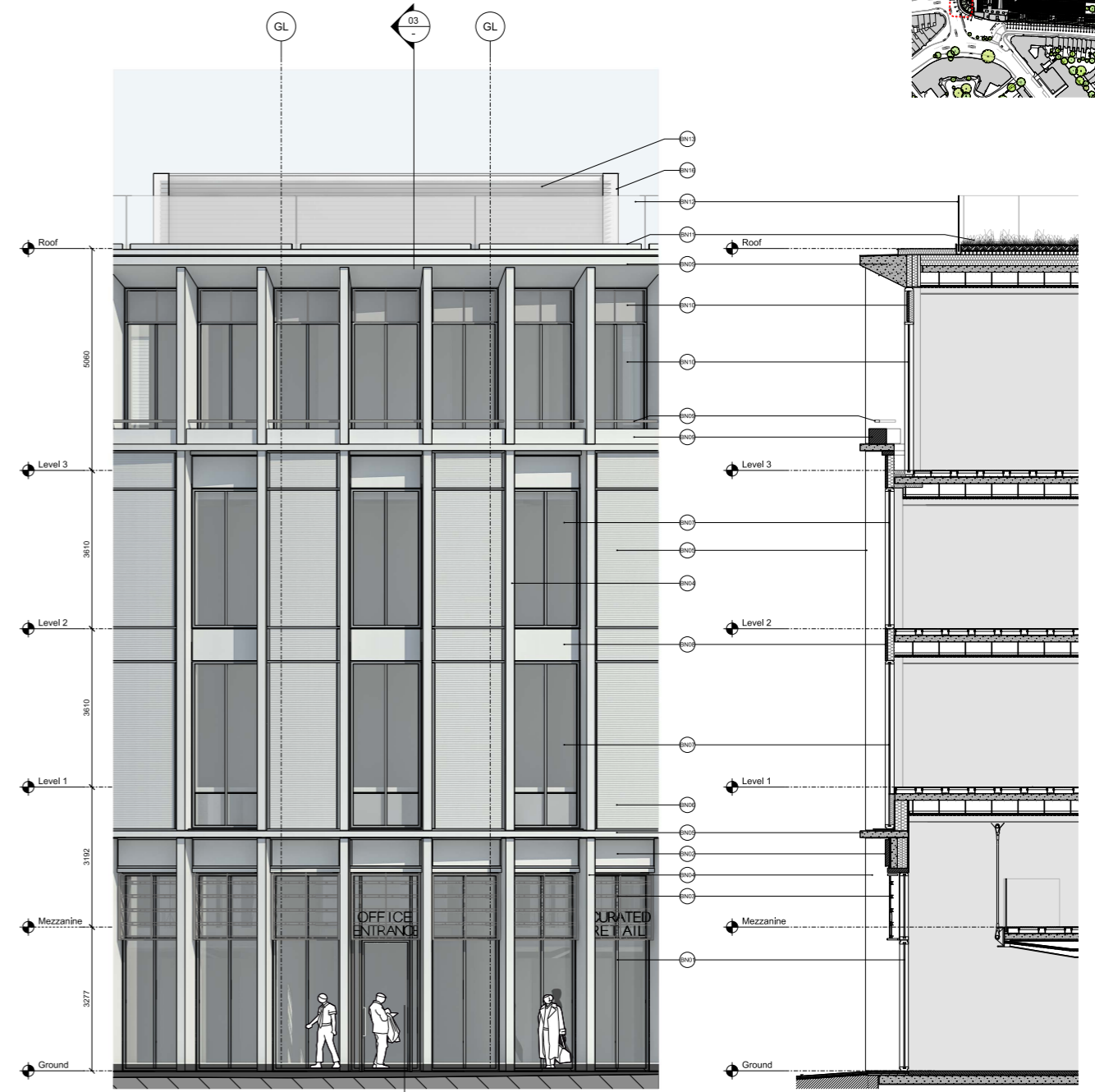
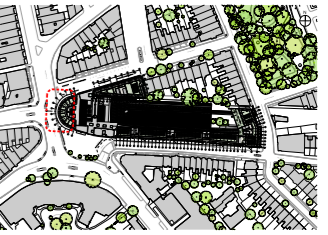
03 DETAILED SECTION 1:50

MATERIALS DESCRIPTION - THE BULLNOSE

- BN01 Ground Floor retail glazing. Full-height double glazing with mid silver grey coloured frames, split at signage rail level, with doors where indicated.
- BN02 Entrance Signage. Painted fabricated steel with integrated retail and office entrance signage to reference the language of the existing station heritage signs. Black painted steel with gold coloured integrated lettering and stone inlets at the top to continue the line of the Arcade Station entrance architraves.
- BN03 Expressed structural columns. Reconstituted stone/precast concrete.
- BN04 Expressed structural beams. Reconstituted stone/precast concrete.
- BN05 Bay front cladding. Reconstituted stone slabs within mid silver grey coloured frames set in front of insulated solid panels.
- BN06 Bay side return glazing. Full-height double glazing with mid silver grey coloured frames.
- BN07 Bay side return low level panels. Reconstituted stone panels within mid silver grey coloured frames and insulation behind at floor level.
- BN08 Top floor glazing. Full-height double glazing with mid silver grey coloured frames.
- BN09 Top floor stone veil. Reconstituted stone slats within mid silver grey coloured frames with solid infill.
- BN10 Top floor brise-soleil. Aluminium solar shading louvers set within mid silver grey coloured frames. Dark grey finish.
- BN11 Green roof. Green roof system with metal edging and blue roof rainwater attenuation drainage system below. Roof build-up and growing medium to comply with CRO Design guidance recommendations and Building Regulations Approved Document for fire safety.
- BN12 Roof balustrade. Edge protection set back from roof edge.
- BN13 Rooftop plant enclosure and lift overruns. Dark grey louvers to street-facing elevation and insulated precast concrete cladding to side flank walls.
- BN14 Gable-end solid cladding. Solid insulated metal panel faced with reconstituted stone slats within mid silver grey coloured frames.
- BN15 Insulated mid silver grey coloured aluminium spandrel panel.
- BN16 Core solid walls. Insulated solid flank walls to lift and stair shafts with reconstituted stone cladding.
- BN17 Gable-end glazing. Full-height double glazing with mid silver grey coloured frames and integrated air intake/exhaust louvers as required.
- BN18 Core end wall cladding. Solid insulated metal panel faced with reconstituted stone slats within mid silver grey coloured frames.



01 DETAILED PLAN 1:50

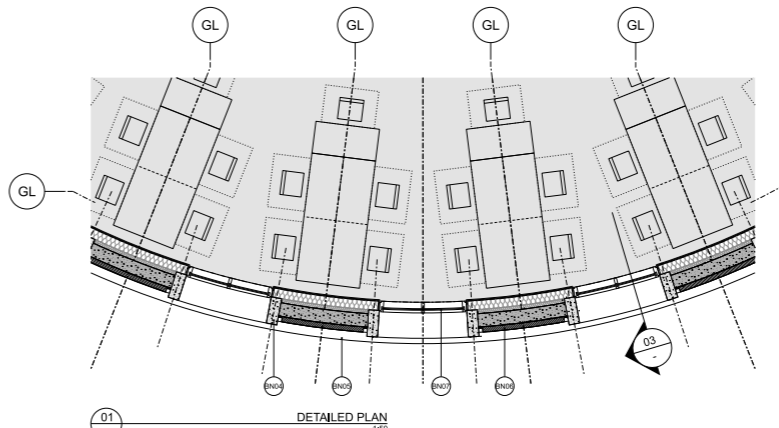


02 DETAILED ELEVATION 1:50

03 DETAILED SECTION 1:50

MATERIALS DESCRIPTION - THE BULLNOSE

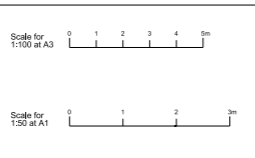
- BN01 Ground Floor retail glazing. Full-height double glazing with mid silver grey coloured frames, split at signage rail level, with doors where indicated.
- BN02 Ground floor stone overpanels. Reconstituted stone/precast concrete panels below expressed beam and above glazing, with reveal lining underneath.
- BN03 Entrance Signage. Painted fabricated steel with integrated retail and office entrance signage to reference the language of the existing station heritage signs. Black painted steel with gold coloured integrated lettering.
- BN04 Expressed structural columns. Reconstituted stone/precast concrete.
- BN05 Expressed structural beams. Reconstituted stone/precast concrete.
- BN06 Solid bay cladding. Reconstituted stone panels with shadow gap joints at interface with columns and spigot panels, with scribed horizontal line texture across surface. Panels set on precast concrete backing, with insulation behind.
- BN07 Glazed bay cladding. Full-height double glazing with mid silver grey coloured frames. First floor glazing with back-cast lead-level sections.
- BN08 Floor level stone spandrels. Reconstituted stone/precast concrete solid panels in same plane as glazing, with shadow gaps to all edges to define floor levels.
- BN09 Top floor parapet wall. Reconstituted stone/precast concrete setback curved parapet wall, with dark metalwork set above to match ground floor signage veils.
- BN10 Top floor glazing. Full-height double glazing within mid silver grey coloured frames, with mid silver coloured zinc panels to upper sections.
- BN11 Green roof. Green roof system with metal edging and blue roof rainwater attenuation drainage system below. Roof build-up and growing medium to comply with CRO Design guidance recommendations and Building Regulations Approved Document for the safety.
- BN12 Roof balustrade. Edge protection set back from roof edge.
- BN13 Rooftop plant enclosure and lift overruns. Dark grey louvers to street-facing elevation and insulated precast concrete cladding to side flank walls.
- BN14 Gable-end solid cladding. Solid reconstituted stone/precast concrete panels with expressed joints and insulation behind, set within mid silver grey coloured frames.
- BN15 Gable-end top floor solid cladding. Solid mid silver grey zinc panels with expressed joints and insulation behind, set within mid silver grey coloured frames.
- BN16 Core solid walls. Insulated solid flank walls to lift and stair shafts with reconstituted stone cladding.
- BN17 Gable-end setback glazing. Full-height double glazing with mid silver grey coloured frames and integrated air intake/exhaust louvers as required.
- BN18 Core end wall cladding. Solid insulated metal panel faced with reconstituted stone slats within mid silver grey coloured frames.



01 DETAILED PLAN 1:50

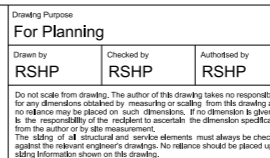
Revision	Date	Description
-	30-03-2020	Planning Issue
P1	04-01-2021	Updated Planning Issue

Drawing Purpose		
For Planning		
Drawn by	Checked by	Authorised by
RSHP	RSHP	RSHP



Project		Drawing Title		Drawing Number		Revision	
South Kensington Station		Proposed Detailed Bay The Bullnose Street-Facing Facade		RSHP-A-04001-D-XX		P1	
Contract: Rogers Stirk Harbour + Partners		Scale @ A1: 1:50		Scale @ A3: 1:100		Drawing Date: 30-03-2020	
The Leadenhall Building 122 Leadenhall Street, London EC3V 4AB		Tel: 020 7385 1235 Fax: 020 7385 8409 email: 111460@rshp-6.com www.rshp.com		Revision Date: 04-01-2021			

Drawing Purpose		
For Planning		
Drawn by	Checked by	Authorised by
RSHP	RSHP	RSHP



Project		Drawing Title		Drawing Number		Revision	
South Kensington Station		Proposed Detailed Bay The Bullnose Street-Facing Facade		RSHP-A-04001-D-XX		P2	
Contract: Rogers Stirk Harbour + Partners		Scale @ A1: 1:50		Scale @ A3: 1:100		Drawing Date: 30-03-2020	
The Leadenhall Building 122 Leadenhall Street, London EC3V 4AB		Tel: 020 7385 1235 Fax: 020 7385 8409 email: 111460@rshp-6.com www.rshp.com		Revision Date: 06-08-2021			